



News from Cabin Creations

May 2019

715-339-6238

www.cabincreationswi.com



Volume 6, Issue 3

May:

May 1st -12th : Yankee Large Jar Candles – 2 for \$40

May 12th: Mother's Day – Open 10am-3pm

May 14th: Next Expected Amish Furniture Delivery

Memorial Weekend Hours:

Fri, May 24th: 9am-6pm

Sat, May 25th: 9am-4pm

Sun, May 26th: 10am-3pm

Mon, May 27th: 9am-3pm

May 30th: Girls Night Out 4pm-8pm (see right for details)

Yankee Fragrance of the Month (25% off):

Color Me Happy, Beach Walk, Lilac Blossoms

Cheese of the Month:

Nut Brown Ale Caerphilly, Special Price \$4.50

Essential Oil of the Month (25% off):

Lemon

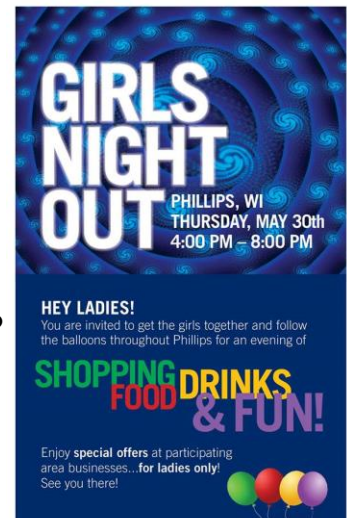
Mother's Day is May 12th!

Mother's Day is fast approaching and we have many wonderful gifts to say thank you to that special lady in your life. In such a fast-paced world, sometimes just the smallest gesture can mean so much to a mom, step-mom, grandmother, aunt, neighbor, or special friend. From lotions to wall art, and chocolates to slippers, we have just about something for everyone on your list. Remember that we offer free gift wrapping (just ask!)



Girls Night Out

We are planning a fun evening for the Phillips' area Girls Night Out event! Please join us on Thursday, May 30th from 4-8pm (we will be ready to go by 3:00 if you'd like to stop here early.) To join, stop by a participating business up to a week in advance to pick up a passport, or pick them up the night of the event. Take the passport to the listed businesses from 4-8pm and collect your stamps. Turn in your card when it's full to enter to win gift baskets worth hundreds of dollars! We are a three stamp stop, joined by Courtney Janak with Mary Kay and Erin Plyer with Norwex. We will have delicious food to sample, as well as some in store specials (we are still planning these!) Go to our Facebook page and like our event to stay up to date on the details for this night of fun. Call your gal pals and make a date for May 31st! You'll have a blast!



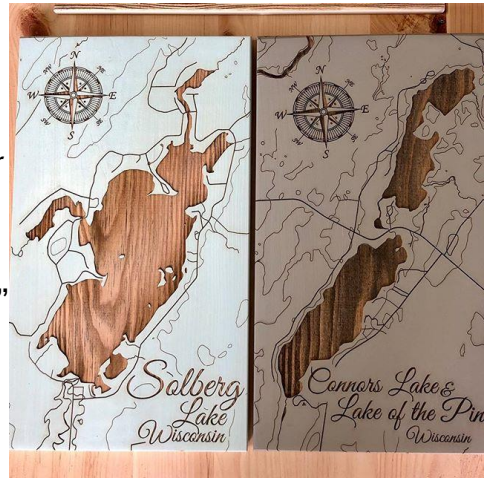
Stay Connected:



Fire & Pine Maps



In March we joined forces with a great company from South Carolina called Fire & Pine. They make one-of-a-kind burnt wood maps. We knew it would be a perfect fit for our area lake maps! They used untreated pine wood with a high-quality exterior paint to create beautiful maps as shown here. We have Solberg, Soo, Musser, Connors, and the Phillips Chain of Lakes available in the small 11.25"x19" size. There are 5 other sizes available, with color choices shown here. Custom lake or land maps are available for a \$50 set-up fee. They are definitely a statement maker!



Recipe Corner :

Spinach & Gouda Stuffed Pork Cutlets



Ingredients:

- 3 Tbsp dry bread crumbs
- 2 Tbsp grated Parmesan cheese
- 2 pork sirloin cutlets (3 oz each)
- 1/4 tsp salt
- 1/8 tsp pepper
- 2 slices smoked Gouda cheese (2 oz)
- 2 cups fresh baby spinach
- 2 Tbsp horseradish mustard

Directions:



Preheat oven to 400°. In a shallow bowl, mix bread crumbs and Parmesan cheese. Sprinkle tops of cutlets with salt and pepper. Layer one end of each with Gouda cheese and spinach. Fold cutlets in half, enclosing filling; secure with toothpicks. Brush mustard over outsides of pork; dip in bread crumb mixture, patting to help coating adhere. Place on greased foil-lined baking sheet. Bake until gold brown and pork is tender – 12-15 minutes. Discard toothpicks before serving. Try the grill, too!

Recipe from www.tasteofhome.com

Teach Me Tuesday on Facebook

If you are on Facebook, be sure to tune in on Tuesdays for our Teach Me Tuesday video series. Each week we give away a \$5 gift certificate just for watching! You'll learn more about our products and get some great gift ideas!



Airomé

ESSENTIAL OIL OF THE MONTH

Lemon Essential Oil

25% OFF
limited time

INGREDIENTS: Citrus limon (lemon) peel oil

DESCRIPTION: A cleansing, zesty aroma. Diffuse it to boost focus and energy and to freshen the air.

TOP BENEFITS: Cleanse • Purify • Boost

AROMA: Zesty & Clean

BLENDS WITH: Eucalyptus | Orange | Peppermint



SEE MORE USAGE TIPS AT
airome.com/eom

